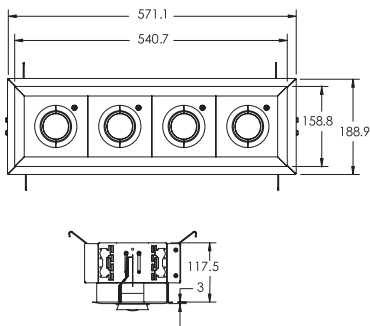


FIBER OPTIC - DOWNLIGHTING



IL-AAL-4R

ADJUSTABLE ACCENT LIGHT, 4-SPOT

Max Overall Dimensions: 22.48" (L) x 7.44" (W) x 4.63" (H)
(571mm x 189mm x 118mm)

Trim / Flange Dimensions: 22.48" (L) x 7.44" (W) x 0.13" (H)
(571mm x 189mm x 3mm)

Aperture Diameter: 2.0" (OD) (51mm) per lens

Rough-in / Cut out: 20.3" x 5.5" (516mm x 140mm)

Recess: 14.0" (356mm) to allow for fiber bend

Primary Material: Steel, Aluminum

Lens Type: Beveled glass, MBF-SOL softening lens available

Beam Angle: 15°, 25°, 40° or 60° *

*60° beam is achieved with no lens installed

Must request at time of order

Fiber Type: Large Core EFOFJ

Rotation: 360°

Max Tilt Angle: +/- 31°

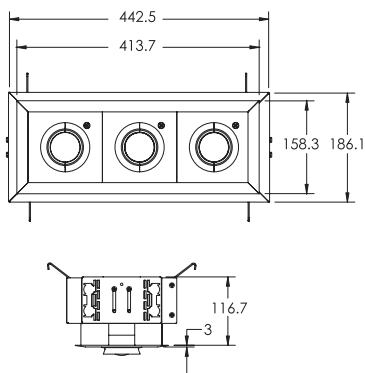
Finishes: Black, White

Ferrule Requirement: Large Core bayonet, attached to Fibertail

Mounting: Fixtures mount to T-Bar ceiling grid with Erico 512HD, Caddy Rails, Impact Lighting Inc.

IL-CR rails or others.

Order part IL-AAL-4R-HC for hard ceiling mount



IL-AAL-4R

ADJUSTABLE ACCENT LIGHT, 4-SPOT

Max Overall Dimensions: 17.44" (L) x 7.44" (W) x 4.63" (H)
(416mm x 159mm x 118mm)

Trim / Flange Dimensions: 17.44" (L) x 7.44" (W) x 0.13" (H)
(416mm x 159mm x 3mm)

Aperture Diameter: 2.0" (OD) (51mm) per lens

Rough-in / Cut out: 15.63" x 5.5" (397mm x 140mm)

Recess: 14.0" (356mm) to allow for fiber bend

Primary Material: Steel, Aluminum

Lens Type: Beveled glass, MBF-SOL softening lens available

Beam Angle: 15°, 25°, 40° or 60° *

*60° beam is achieved with no lens installed

Must request at time of order

Fiber Type: Large Core ILFJ

Rotation: 360°

Max Tilt Angle: +/- 31°

Finishes: Black, White

Ferrule Requirement: Large Core bayonet, attached to Fibertail

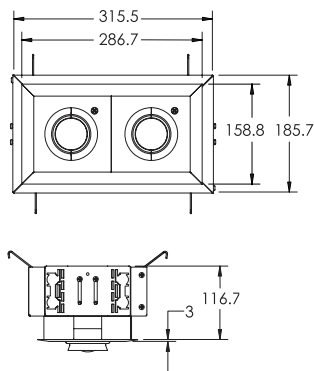
Mounting: Fixtures mount to T-Bar ceiling grid with Erico 512HD

Caddy Rails, Impact Lighting Inc. IL-CR rails or others.

Order part IL-AAL-3R-HC for hard ceiling mount



FIBER OPTIC - DOWNLIGHTING



IL-AAL-2R

ADJUSTABLE ACCENT LIGHT, 2-SPOT

Max Overall Dimensions: 12.44" (L) x 7.32" (W) x 4.63" (H)
(316mm x 186mm x 118mm)

Trim / Flange Dimensions: 12.44" (L) x 7.32" (W) x 0.13" (H)
(316mm x 186mm x 3mm)

Aperture Diameter: 2.0" (OD) (51mm) per lens

Rough-in / Cut out: 10.63" x 5.5" (270mm x 140mm)

Recess: 14.0" (356mm) to allow for fiber bend

Primary Material: Steel, Aluminum

Lens Type: Beveled glass, MBF-SOL softening lens available

Beam Angle: 15°, 25°, 40° or 60° *

*60° beam is achieved with no lens installed

Must request at time of order

Fiber Type: Large Core ILFJ

Rotation: 360°

Max Tilt Angle: +/- 31°

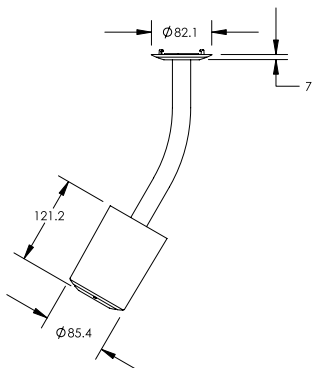
Finishes: Black, White

Ferrule Requirement: Large Core bayonet, attached to Fibertail

Mounting: Fixtures mount to T-Bar ceiling grid with Erico 512HD

Caddy Rails, Impact Lighting Inc. IL-CR rails or others.

Order part IL-AAL-2R-HC for hard ceiling mount 3116.7185.7315.5286.7158.83116.7185.7315.52
86.7158.8116.73158.3413.7442.5186.1116.73158.3413.7442.5186.13117.5158.8540.757



IL-MBF-F

MUTIBEAM FIXTURE WITH FLEX ARM

Max Overall Dimensions: 3.308" (OD) x 18.504" (H) (84mm x 470mm)

Trim / Flange Dimensions: 3.308" (OD) x 4.764" (H) (84mm x 121mm)

Aperture Diameter: 1.969" (OD) (51mm)

Rough-in / Cut out: 2.638" (67mm)

Recess: 14.016" (356mm) to allow for fiber bend

Suspension: 14" (356mm) Max

Primary Material: Steel

Lens Type: Beveled glass, MBF-SOL softening lens available

Beam Angle: 15°, 25°, 40° or 60° *

*60° beam is achieved with no lens installed

Must request at time of order

Fiber Type: Large Core ILFJ

Finishes: Black, White

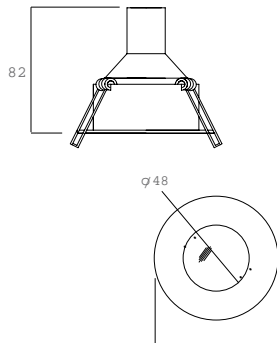
Ferrule Requirement: Large Core bayonet, attached to Fibertail

Mounting: Fixtures mount to T-Bar ceiling grid with Erico 512HD

Caddy Rails, Impact Lighting Inc. IL-CR rails or others. Fixtures mount
to hard ceiling using optional butterfly brackets, IL-BFB



FIBER OPTIC - DOWNLIGHTING



IL3004

MULTIBEAM DOWNLIGHT WITH SPRING CLIPS

Max Overall Dimensions: 3.543" (OD) x 3.228" (H) (90mm x 82mm)

Trim / Flange Dimensions: 3.543" (OD) x 0.079" (H) (90mm x 2mm)

Aperture Diameter: 1.890" (48mm)

Rough-in / Cut out: 2.913" (74mm)

Recess: 14.016" (365mm) to allow for fiber bend

Primary Material: Metal

Lens Type: Beveled glass lens

Beam Angle: 15°, 25° or 40°

Fiber Type: Large Core Fiber, ILFJ

Finishes: Black, White, Gold

Ferrule Requirement: Large Core bayonet, attached to Fibertail

Mounting: Spring clips included

