

# TRANSLUCENT CONCRETE

## **GALAXY TRANSLUCENT CONCRETE™**

Translucent concrete is produced out of fine-grain concrete and translucent fabric which is layer cast in prefabricated moulds.

Daylight penetration through optic fibres makes it possible to see light, shadows and even colours through concrete even with very thick walls.

It can be produced as prefabricated building blocks and panels.



## UNLIMITED APPLICATIONS:

### **Illuminate Your Walls**

Galaxy Translucent Concrete can be used as building material for interior and exterior walls. If sunshine illuminates the wall structure then eastern or western placement is recommended; The rays of the rising or setting sun will hit the optical glass fibers in a lower angle and the intensity of the light will be bigger. Besides the traditional applications of a wall, the light transmitting concrete can also be used as wall covering illuminated from the back.

### **Watch Your Pavement Shine at Sunset**

This product can be used as flooring – a passable surface illuminated from below. During the day it looks like typical concrete pavement but at sunset the paving blocks begin to shine in different colors.



### **Get Creative with Design**

The building units are versatile and can be used in many areas of design. You can also create a logo with colorful figures, inscriptions and pictures.

# TRANSLUCENT CONCRETE

## **GALAXY TRANSLUCENT CONCRETE™**

### **Artsy Reception Desk**

If you really want to create a look that stands out you should opt for an artsy and vogue reception desk that illuminates from the front and the sides.

### **A Lighting fixture and Conversational Piece**

The Galaxy Cube is without a doubt, a great conversation piece. Impact Lighting Inc. has built many custom cubes for commercial and residential projects and delivered them all over the world. The new cube line consists of four identical pieces of concrete and due to its special geometry, the pieces form a stable structure without fixing them together.



16

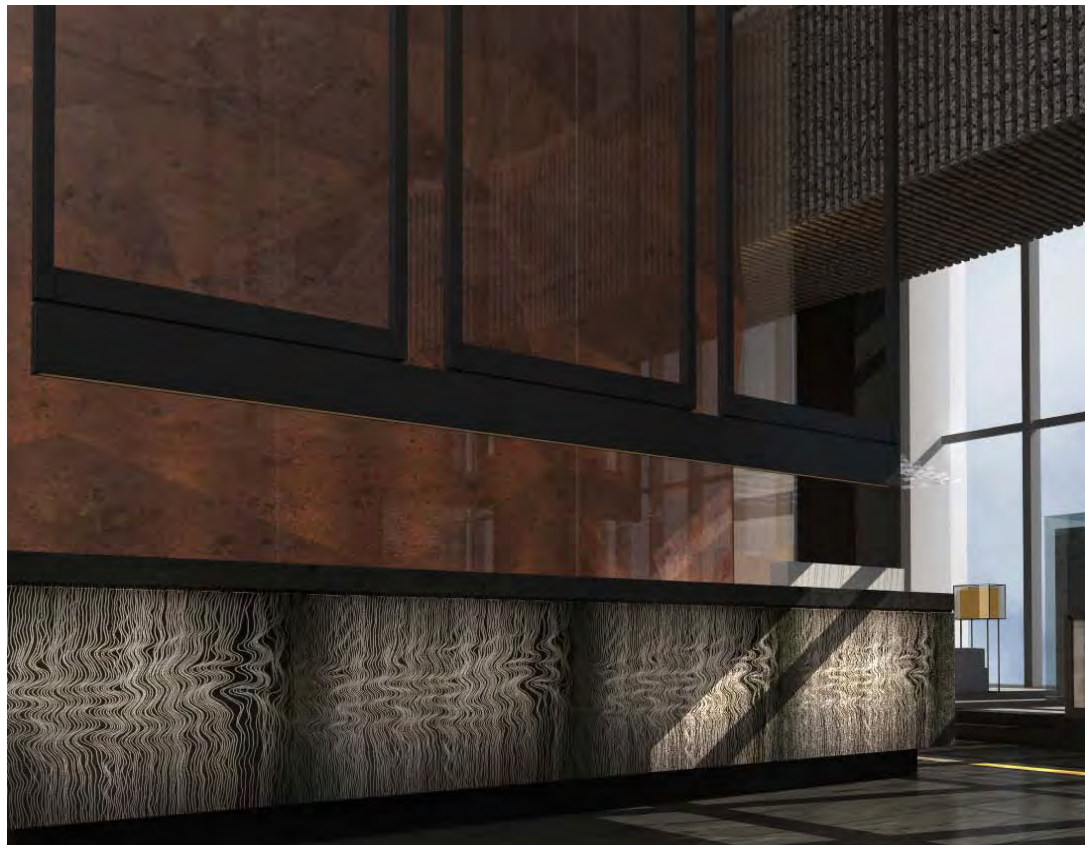


### **Translucent Concrete Stairs**

With Impact Lighting Inc.'s Linear LED fixtures our Galaxy Translucent Concrete product can be used in horizontal and vertical applications such as feature stairs, walls, flooring, tables and counter tops.

## TECHNICAL DATA

- Ingredients: 96% concrete 4% optical fibre
- Exceeds ASTM C 387
- Compressive Strength
- 7 day 3,000 psi (21 Mpa)
- 28 day 5,000 psi (34 Mpa)
- Density: 2100-2400 kg/m<sup>3</sup>
- Compressive strength: 50 N/mm<sup>2</sup>
- Bending tensile strength: 7 N/mm<sup>2</sup>
- Finish: polished



17

## TRANSLUCENT CONCRETE PANELS

**FORMATS:** 24" X 12"  
16" X 8"  
12" X 12"  
CUSTOM

**THICKNESS:** 1 inch / 2 inches / custom

**COLORS:** White, Grey, Black

**PROPERTIES:** Density: app. 2300 kg/m<sup>3</sup>

**BENDING STRENGTH:** > 4 N/mm<sup>2</sup>

**SURFACE:** View sides fine grinded and impregnated, edges chamfered.

**INSTALLATION:** Wall installation with wall anchors on load bearing walls or on supporting construction.

Floor installation on any sufficient bearing substructure. Freestanding placement with selfsupporting frame construction.